



Jaume CAMIN

Exposition d'Artefacts

**"Un pèlerin traverse
le Médoc"**

Chapelle de l'Hôpital

du 24 au 28 Juillet 2021

10h30 - 13 h

16 h - 19 h

*A l'Hôpital, route des lacs (à 4 kms de Grayan)
Commune de GRAYAN-ET-L'HOPITAL*

Entrée libre avec la participation des Amis de la Chapelle



Presentation

The works presented are the result of marine and wind erosion that repel the coastline between Montalivet and Amélie.

Cliffs emerge, revealing different geological layers that sometimes overlap each other, sometimes intertwine with each other, revealing shapes and colours with subtle and often ephemeral nuances.

The work presented is a photographic vision of the natural elements visible on the beaches of the Medoquine coast. Sometimes a single photo is enough, sometimes an assembly of several shots is necessary, to obtain a landscape or an expression

All colors exist in the native state, but photographic techniques allow to reveal and sublimate them.



Traces on the sand left by the surf



Caves appeared in 2018 at the level of the dogs beach at euronat.



Once the work is created on a computer it is printed on art paper or on Print on canvas in a format that can go up to 2 meters.

Each work is drawn in 10 copies. A certificate of authenticity is provided for each print.



1 - Pilgrim crossing the Gironde estuary

Dimension : 100 x 67 cm

Material: Print on canvas

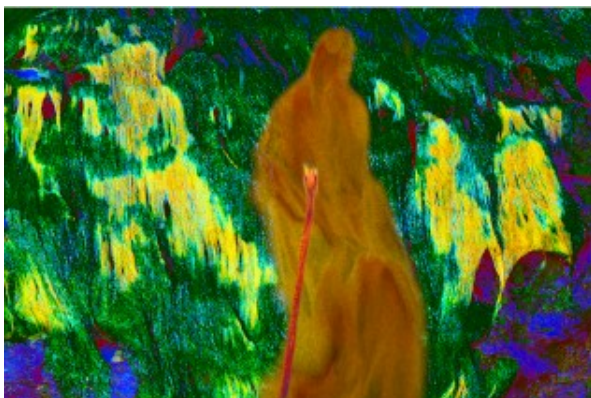
Arriving from Saintonge, the pilgrim had to cross the estuary at Talmont to get to Notre Dame de la fin des Terres in Soulac. The basilica had a statue of Notre Dame and relics of the Saint Veronique, these attracted the pilgrims.

2 - Pilgrim crossing the Medoquins swamps

Dimension : 100 x 67 cm

Material : Art paper

A pilgrim from Santiago arrives at SOULAC and crosses the Médoc following the coastal path.



3 - Pilgrim crossing the forest gallery

Dimension : 100 x 67 cm

Material: Print on canvas

heading towards the commandery of the Hospitals of Saint John of Jerusalem, the pilgrim must take a path in a dense forest conducive to traps.

4 - Prayer

Dimension : 60 x 40 cm

Material: Print on canvas

Pélerins empruntant la voie littorale, en prière à la chapelle de l'Hôpital.

Pilgrims taking the coastal route, in prayer in the chapel. In the village of the Hopital you will find the chapel of Saint John the Baptist. This chapel is the last witness of a commanderie of the Order of the Hospitallers of Saint John of





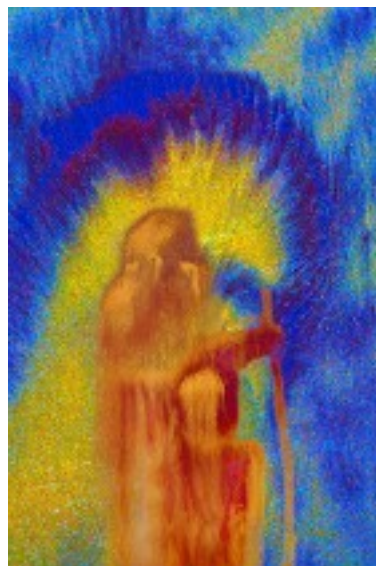
Jerusalem which welcomed the pilgrims coming from Soulac since the XII century.

5 - Pilgrim in the setting sun

Dimension : 67 x 100 cm

Material: Print on canvas

Pilgrim equipped with his pilgrim staff, cannot resist the vision of the sunset from the top of the coastal dune.



6 - Pilgrim through the oak forest

Dimension : 100 x 67 cm

Material: Print on canvas

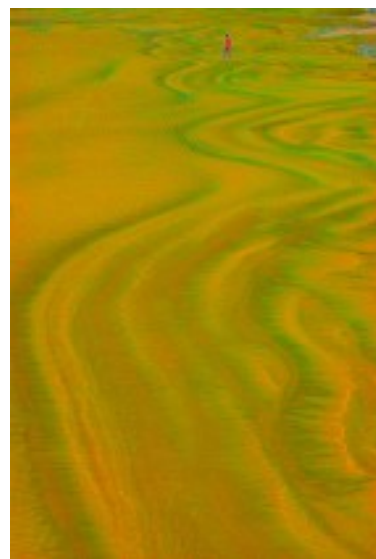
A lone pilgrim crosses the oak forests followed by disturbing shadows.

7 - Pilgrim leaving for the Landes

Dimension : 54 x 80 cm

Material: Print on canvas

After having crossed the Medoc, the pilgrim heads for the moors where not only the flies await for him but also the heat, the quicksand, and the lack of bread, wine and water.





Jaume CAMIN

Jaume



Les impressions sur toile sont réalisées par

Ch. Viaud.
AGENCE
PHOTO
CREATION
268 bis rue d'Ornano
33000 BORDEAUX